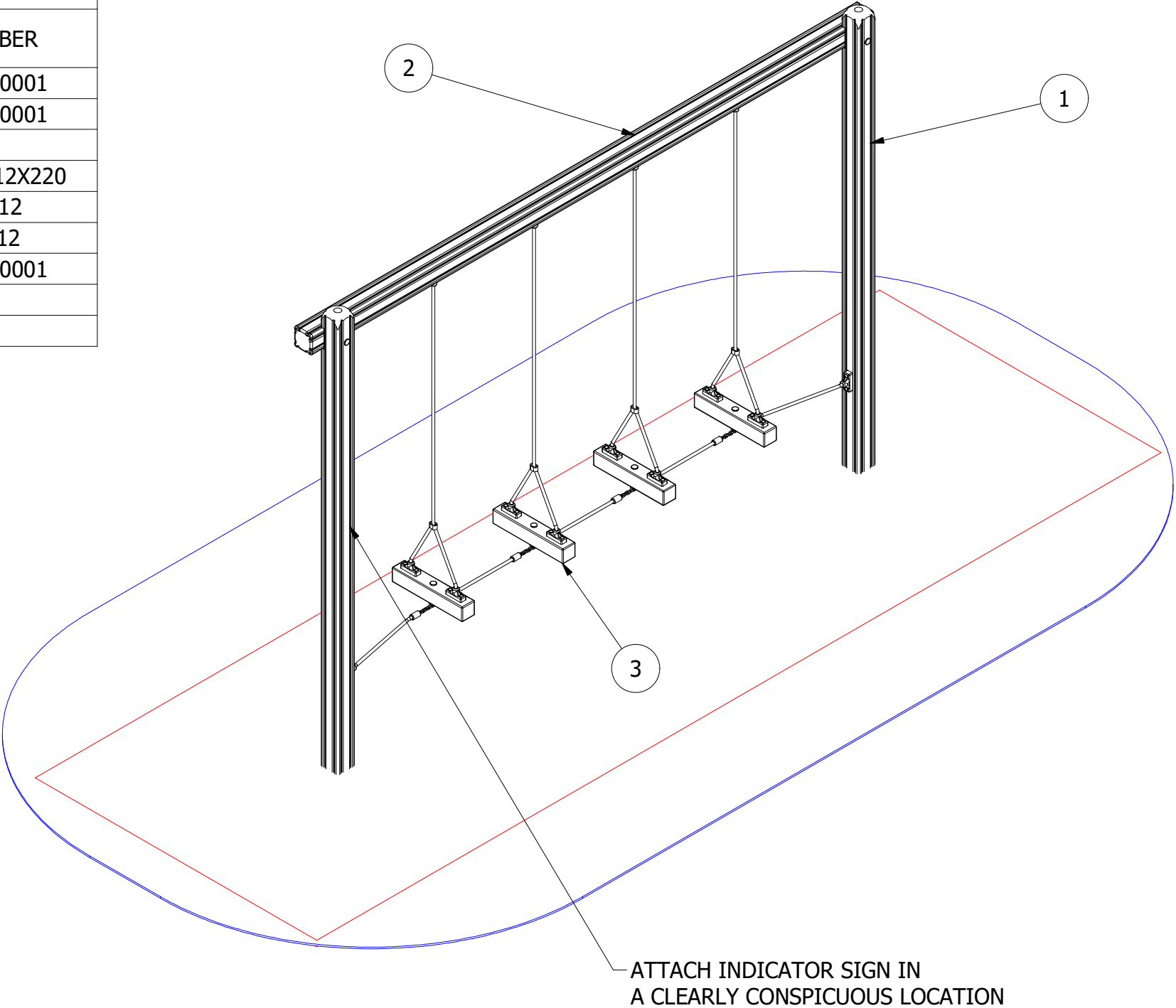
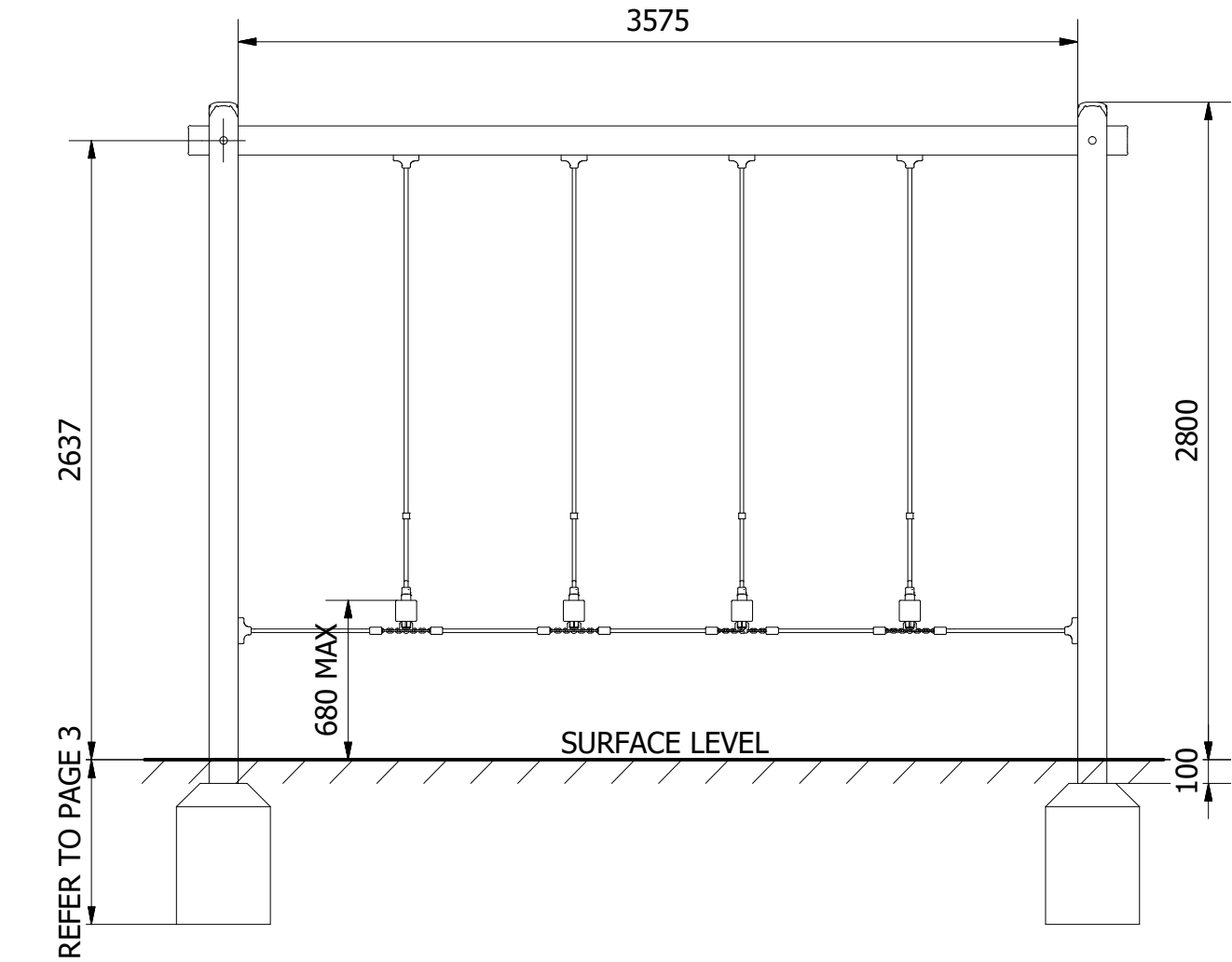



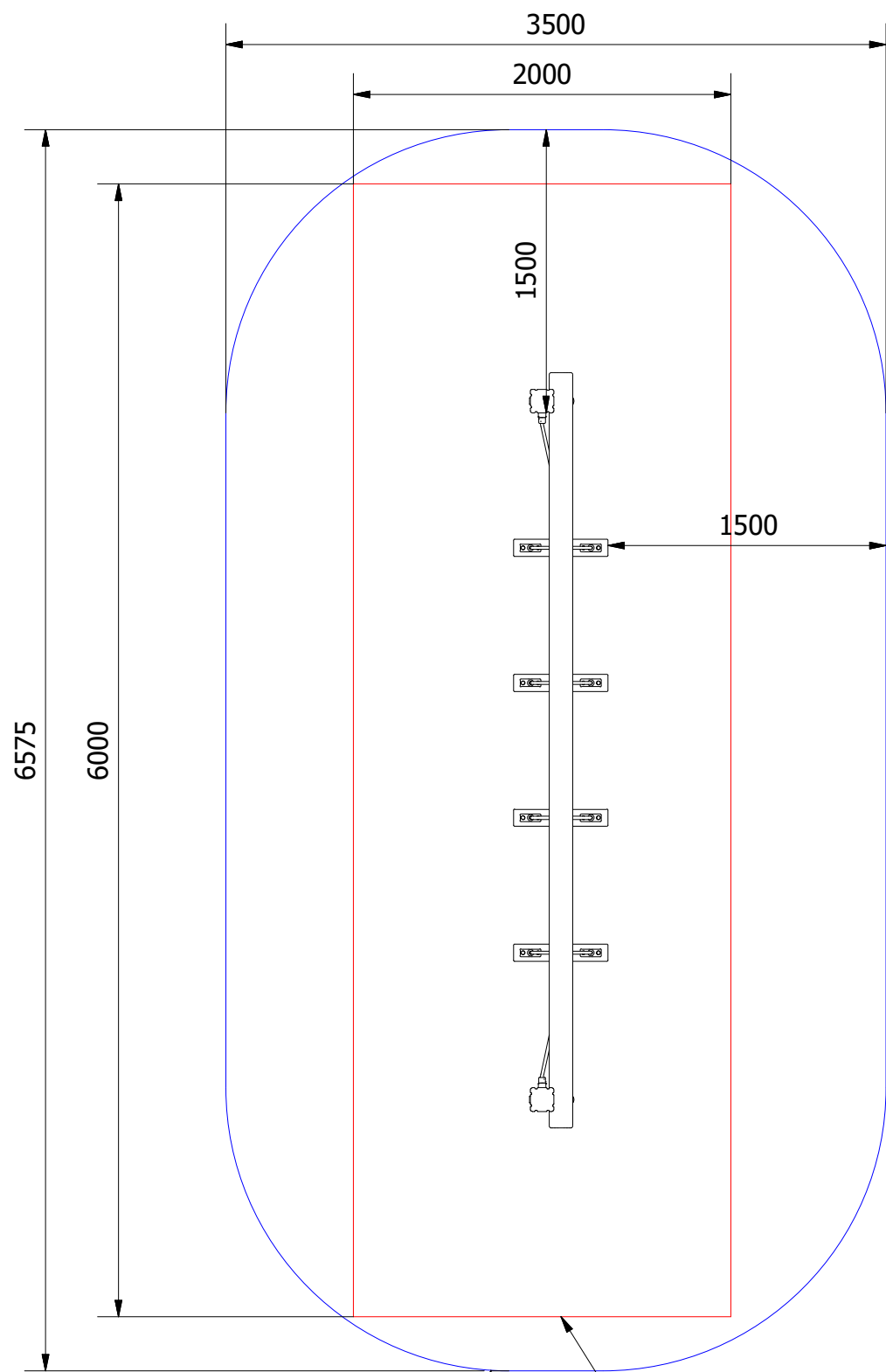
| PARTS LIST |     |                      |   |                |
|------------|-----|----------------------|---|----------------|
| ITEM       | QTY | PART NUMBER          | DESCRIPTION                             | STOCK NUMBER   |
| 1          | 2   | TB-200-525           | 3500MM X 125MM SAFALOG                  | COMTIMSAF0001  |
| 2          | 1   | TB-200-526           | 4000MM X 125MM SAFALOG                  | COMTIMSAF0001  |
| 3          | 1   | RS-100-043           | SWINGING STEPS                          |                |
| 4          | 2   | M12 X 220 COACH BOLT | M12 X 220 (DIN 603)                     | COMA2CBM12X220 |
| 5          | 2   | M12 WASHER           | M12 WASHER (DIN 125)                    | COMA2FWM12     |
| 6          | 2   | M12 NYLOC NUT        | M12 NYLOC NUT (DIN 985)                 | COMA2NNM12     |
| 7          | 2   | 30MM BOLT COVER      | 30MM BLACK CAP                          | COMPLACAP0001  |
| 8          | 4   | GROUND IRON          | FOUNDATION GROUND IRON                  |                |
| 9          | 2   | 400 x 400 x 600      | 0.096M <sup>3</sup> CONCRETE FOUNDATION |                |

| FITNESS INDICATOR SIGN |     |                        |   |  |
|------------------------|-----|------------------------|---|--|
| ITEM                   | QTY | PART NUMBER            | DESCRIPTION                             |  |
| 2                      | 1   | PE-400-035             | COMSIGSIG0032                           |  |
| 3                      | 4   | M3 X 25 POZI PAN SCREW | COMHARSTA0009                           |  |
| 4                      | 1   | GROUND IRON            | FOUNDATION GROUND IRON                  |  |
| 5                      | 1   | 300 x 300 x 400        | 0.036M <sup>3</sup> CONCRETE FOUNDATION |  |



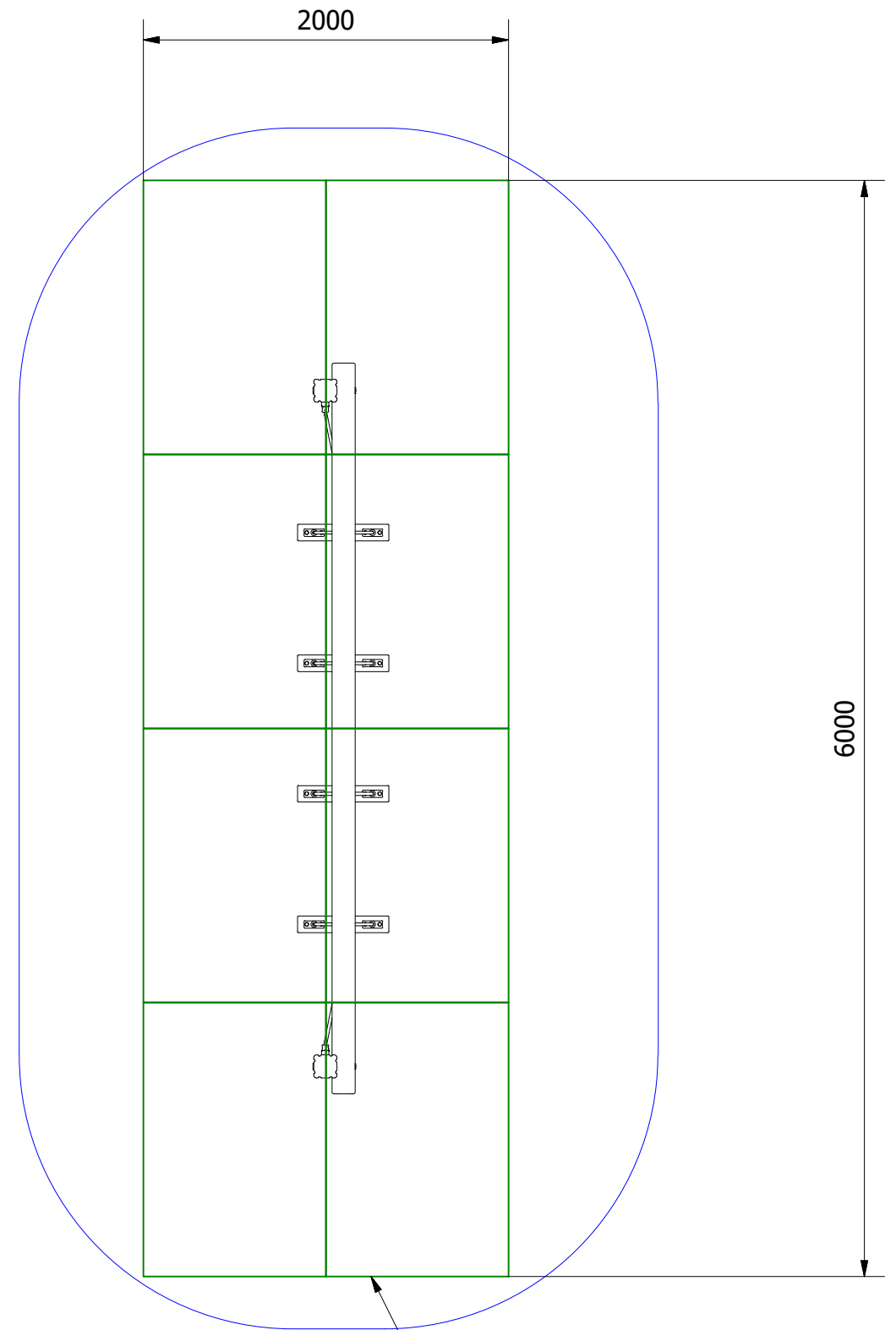
NOTES:  
STEELWORK: EXPORT - ALUMINIUM  
U.K - STAINLESS STEEL  
INDICATOR SIGN: EXPORT - COMSIGSIG0042  
U.K - COMSIGSIG0032

|   |   |  |                     |
|---|---|--|---------------------|
| <div>UNLESS OTHERWISE SPECIFIED:<br/>DIMENSIONS ARE IN MILLIMETERS<br/>TOLERANCES:<br/>LINEAR: ±2MM<br/>1 DECIMAL PLACE: ±0.5MM<br/>ANGULAR: ±1°</div> <div></div> | <div>PROPRIETARY AND CONFIDENTIAL</div> <div>THE INFORMATION CONTAINED IN THIS<br/>DRAWING IS THE SOLE PROPERTY OF<br/>FENLAND LEISURE PRODUCTS. ANY<br/>REPRODUCTION IN PART OR AS A WHOLE<br/>WITHOUT THE WRITTEN PERMISSION<br/>OF FENLAND<br/>LEISURE PRODUCTS IS PROHIBITED.</div> | Title:<br>PRO-500-181 SWINGING STEPS (FC4)       |                     |
|   |   | Product Range:<br>FITNESS TRAIL                  |                     |
|   |   | <0.7M FFH  | Date:<br>04/10/2020 |
|   |   |  | Page:<br>A3         |
| DO NOT SCALE FROM DRAWING   |   | Tel: 01354 638359    www.onlineplaygrounds.co.uk |                     |



MIN SPACE

WETPOUR AREA = 12.0M<sup>2</sup>  
PERIMETER = 16.0 L/M



8 SAFAGRASS TILES (1.5 X 1.0)

UNLESS OTHERWISE SPECIFIED:  
DIMENSIONS ARE IN MILLIMETERS  
TOLERANCES:  
LINEAR: ±2MM  
1 DECIMAL PLACE: ±0.5MM  
ANGULAR: ±1°

**PROPRIETARY AND CONFIDENTIAL**  
THE INFORMATION CONTAINED IN THIS  
DRAWING IS THE SOLE PROPERTY OF  
FENLAND LEISURE PRODUCTS. ANY  
REPRODUCTION IN PART OR AS A WHOLE  
WITHOUT THE WRITTEN PERMISSION  
OF FENLAND  
LEISURE PRODUCTS IS PROHIBITED.

Title: PRO-500-181 SWINGING STEPS (FC4)

Product Range: FITNESS TRAIL

Date:  
04/10/2020

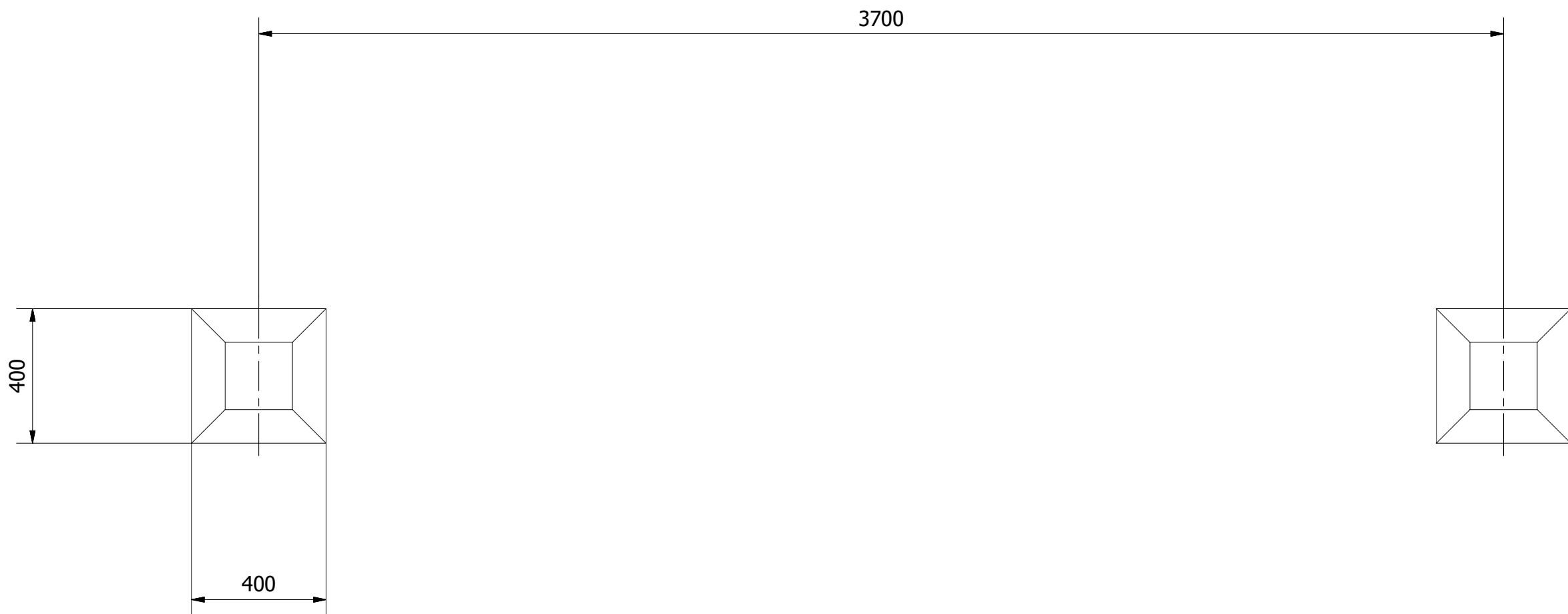
Page:

A3


DO NOT SCALE FROM DRAWING

Tel: 01354 638359 www.onlineplaygrounds.co.uk

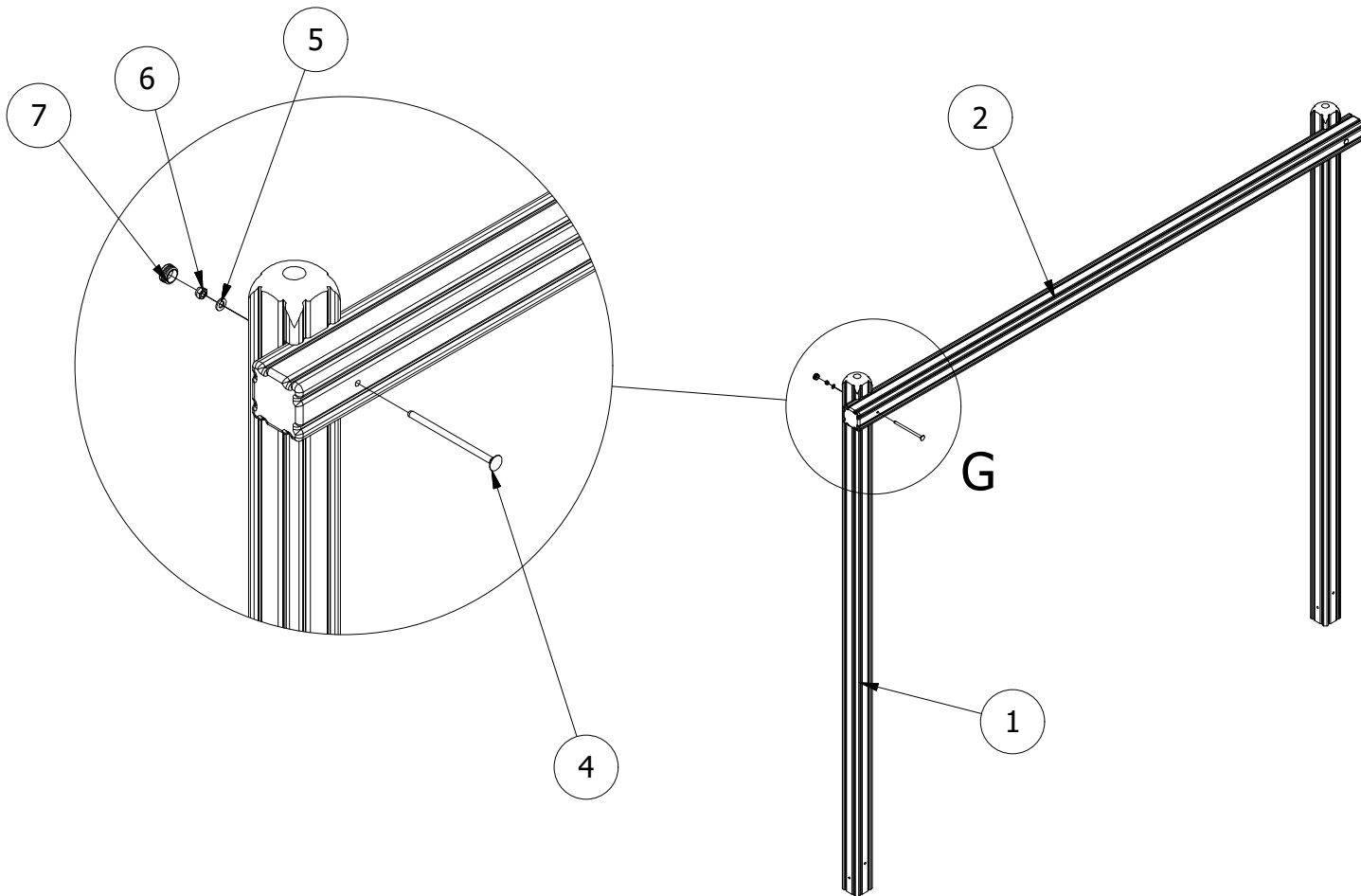
**OLP**  
online playgrounds



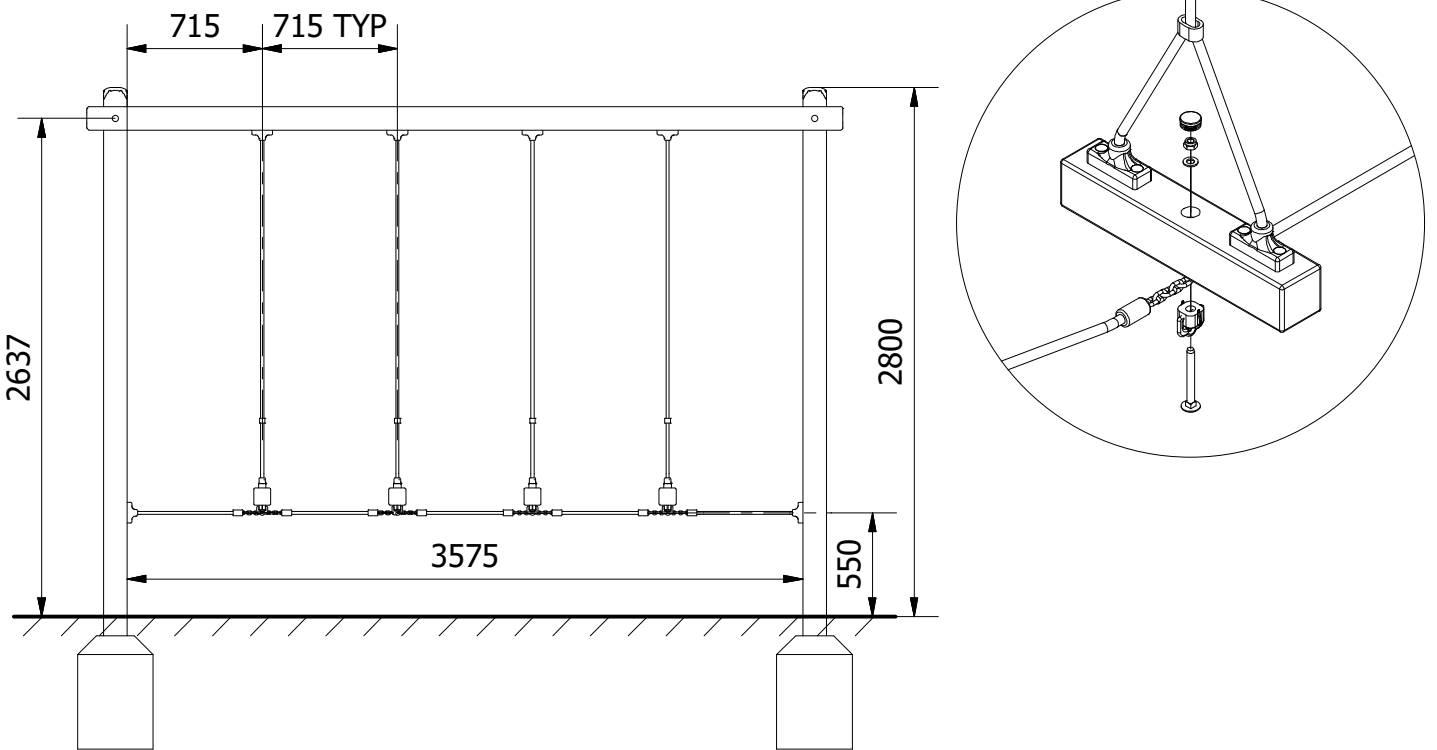
ALL FOUNDATIONS 400 X 400 X 700 DEEP UNLESS OTHERWISE SPECIFIED

|  |   |  |  |  |
|--|---|--|--|--|
| <div>UNLESS OTHERWISE SPECIFIED:<br/>DIMENSIONS ARE IN MILLIMETERS<br/>TOLERANCES:<br/>LINEAR: ±2MM<br/>1 DECIMAL PLACE: ±0.5MM<br/>ANGULAR: ±1°</div> | <div>PROPRIETARY AND CONFIDENTIAL</div> <div>THE INFORMATION CONTAINED IN THIS<br/>DRAWING IS THE SOLE PROPERTY OF<br/>FENLAND LEISURE PRODUCTS. ANY<br/>REPRODUCTION IN PART OR AS A WHOLE<br/>WITHOUT THE WRITTEN PERMISSION<br/>OF FENLAND<br/>LEISURE PRODUCTS IS PROHIBITED.</div> | <div>Title:</div> <div>PRO-500-181 SWINGING STEPS (FC4)</div>  |  |  |
|  |   | <div>Product Range:</div> <div>FITNESS TRAIL</div>   |  |  |
|  | <div></div>  | <div>DO NOT SCALE FROM DRAWING</div>   |  | <div>Date:</div> <div>04/10/2020</div> |
|  |   |  |  | <div>Page:</div>                       |
|  |   |  |  | <div>A3</div>                          |
|  |   | <div>Tel: 01354 638359    <a href="http://www.onlineplaygrounds.co.uk">www.onlineplaygrounds.co.uk</a></div> |  |  |

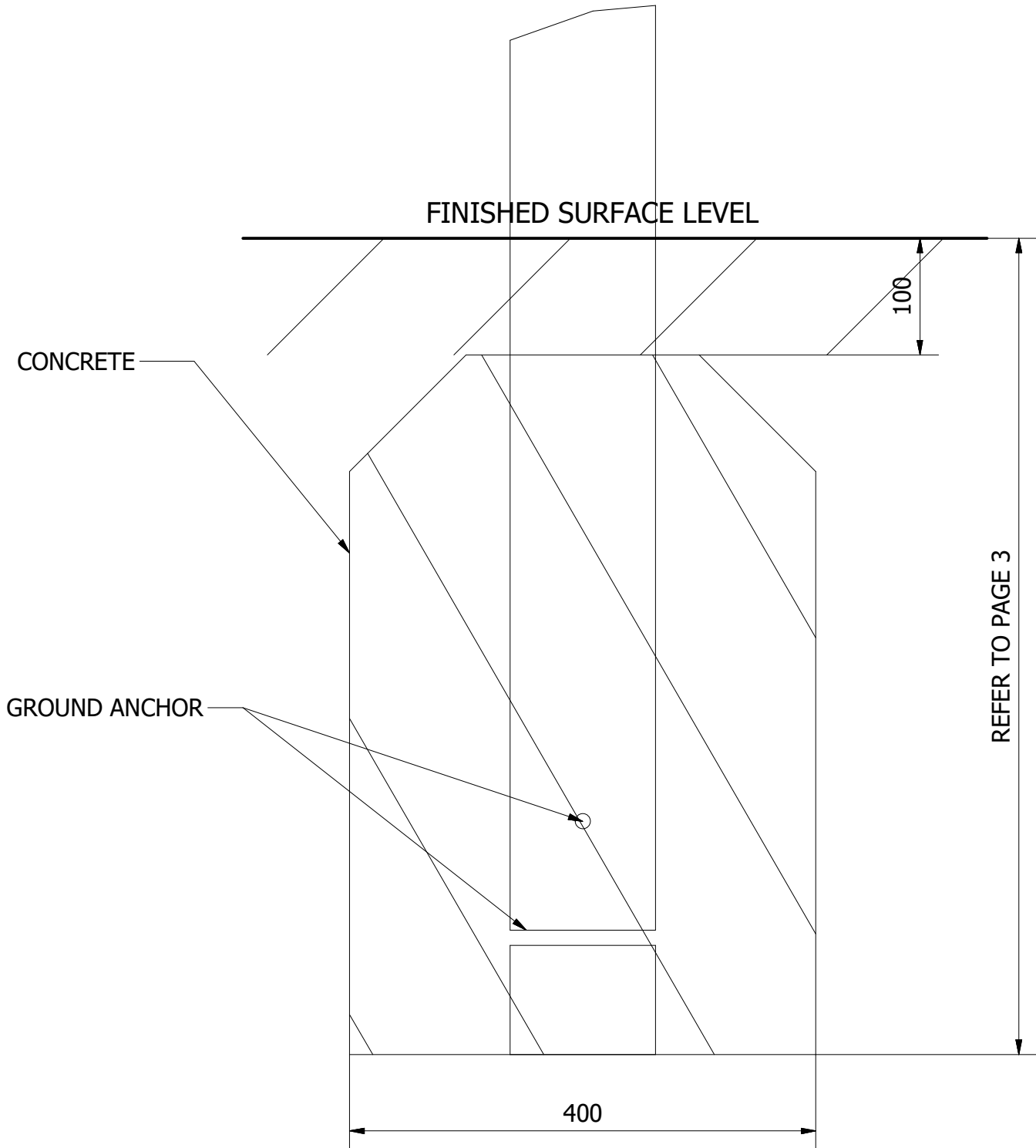
1. CREATE THE FRAME AS SHOWN BELOW AND BRACE IN POSITION. WITH THE FRAME BRACED, ENSURE THE UNIT IS LEVEL AND PLUMB. ADD CONCRETE TO EACH FOUNDATION HOLE AND LEAVE FOR 48 HOURS.



2. WITH THE FRAME SET IN PLACE, HANG THE ROPES USING THE SPACINGS PROVIDED BELOW. WITH THE ROPES HANGING FROM TOP BAR, SECURE THE SWINGING STEPS USING THE FIXINGS ILLUSTRATED BELOW.



3. FINALLY, ENSURE ALL FIXINGS HAVE BEEN TIGHTENED AND PROTECTIVE CAPS IN PLACE.



UNLESS OTHERWISE SPECIFIED:  
DIMENSIONS ARE IN MILLIMETERS  
TOLERANCES:  
LINEAR:  $\pm 2\text{MM}$   
1 DECIMAL PLACE:  $\pm 0.5\text{MM}$   
ANGULAR:  $\pm 1^\circ$

**PROPRIETARY AND CONFIDENTIAL**  
THE INFORMATION CONTAINED IN THIS  
DRAWING IS THE SOLE PROPERTY OF  
FENLAND LEISURE PRODUCTS. ANY  
REPRODUCTION IN PART OR AS A WHOLE  
WITHOUT THE WRITTEN PERMISSION  
OF FENLAND  
LEISURE PRODUCTS IS PROHIBITED.

Title: **PRO-500-181 SWINGING STEPS (FC4)**

Product Range: **FITNESS TRAIL**

Date:  
04/10/2020

Page:  
A3



DO NOT SCALE FROM DRAWING

Tel: 01354 638359 www.onlineplaygrounds.co.uk