



Cleaning Guide  
**Playground Surfacing**



## Disclaimer

---

All CONICA Ltd. and Online Playgrounds products and systems are designed to deliver exceptional performance and durability. Failure to follow these guidelines could adversely affect your safety surface, resulting in a deterioration in aesthetics, accelerated wear or even safety surface failure.

CONICA Ltd. and Online Playgrounds cannot be held responsible for loss, or damage resulting from a failure to follow these guidelines. The information in this document has been provided in good faith and is believed to be correct.

This version dated 26/07/24 supersedes all previous versions.

## Cleaning Guidance

---

There is no such thing as a maintenance free surface, all safety surface installations will require some degree of routine maintenance throughout its life. CONICA Ltd. recommends a regular planned maintenance and cleaning schedule for all installations. This will prolong the life of the safety surface and maintain its aesthetic appearance, whilst also reducing the risk of slips, trips and falls.



## General cleanliness

---

To further improve cleanliness, it is recommended that overhanging trees and plants are regularly cut back. This will allow more sunlight to penetrate and will avoid much of the plant debris falling on the surface. This results in a much drier and cleaner surface that will be less prone to attacks by environmental contaminants.

The top wearing layer will become contaminated with dirt from children's shoes, wind-blown dust, leaf debris and various contaminants such as chewing gum, soft drinks, etc. The most effective method of cleaning is by use of a jet



wash, though chewing gum is best dealt with by using a freezing spray to embrittle the gum and make it easier to remove. All loose rubber, litter, leaves and surface debris should be removed regularly using a leaf blower and sweeping brush. Accelerated wear may occur if this is not carried out.

If the top wearing layer is not cleaned regularly, the slip resistance will be impaired, and the safety surface could become hazardous.

## Deep Cleaning

---

Periodic deep cleaning should be conducted to thoroughly clean the surfacing and to ensure any pore structure remains clear allowing free drainage. Free drainage will ensure the surface dries quickly, maintaining safety and slowing the build-up of algae and other environmental contaminants.

Deep cleaning should be conducted using a jet wash. The jet wash should have a jet / rotary head and the pressure must not exceed

2000 psi. When cleaning, the head must be no closer than 25mm from the surface and kept at an angle not more than 45°. Before jet washing CONICA Ltd. recommends that the surface integrity is assessed to ensure it is free from cracks, soft spots and any damage before proceeding. If any repairs are required, it is recommended that these are carried out prior to jet washing

## Moss and Algae

---

In certain situations, and in some seasons, algae or moss can become established on the surface. Since prevention is very much more effective than cure, it is important to treat the affected areas of the surface with a good proprietary moss killer and algacide at least once a year.

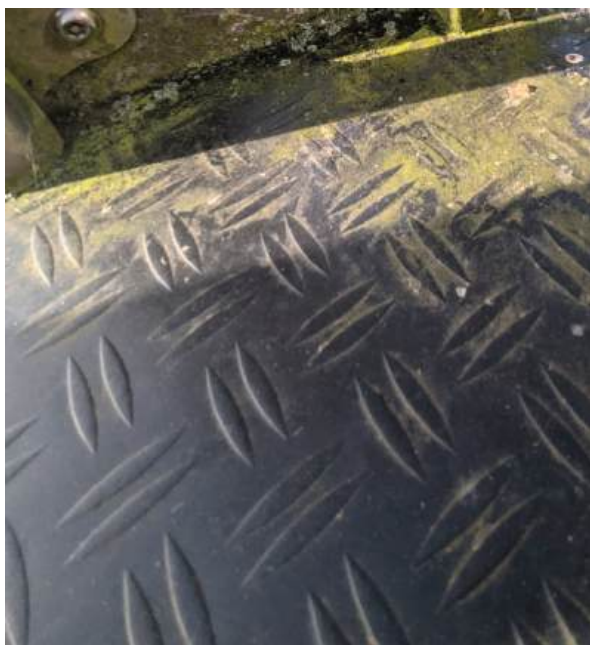
Moss is not usually found on the parts of the surface that are trafficked by play, although it may not be essential to treat these areas it is still a wise precaution to do so. However, particular attention should be paid to the perimeter and other areas that are not trafficked, especially if they are shaded by walls or buildings, overhung by trees or are under equipment. Any good proprietary product should be satisfactory, provided it is not oil based.

Where moss becomes established, it should be treated immediately. The application is repeated after the dead spores are removed, until eradication is complete. The dead moss may be removed by using a jet wash, but with care being taken as this can damage the safety surface.



It should be emphasised that moss is only a serious problem if it is allowed to become established.

## Mould and lichen, including black spot ---



These issues normally occur on poorly maintained surfaces. Should a customer indicate that they are experiencing this type of issue and normal cleaning by jet washing hasn't been successful, a more intensive approach using a specialist cleaning chemical will be required. One product we have identified as effective is Powerclean from Servochem ([www.servochem.co.uk](http://www.servochem.co.uk)).

Powerclean is an industrial cleaning chemical, so it is essential to complete a COSHH assessment and supply a risk assessment and method statement to the customer. It should be noted that the more established the issue, the harder it will be to remove. It may be necessary to undertake intensive cleaning multiple times over a 2-3 week period to obtain the best results.

## Weeds ---

No matter how much care is taken, weeds may occasionally appear on the surface, usually as a result of windblown seeds. Small numbers of weeds can be removed by hand without damaging the surface. If the weeds are removed by hand, it is important to ensure that the full root of the weed is extracted, not broken off. Some weeds are more prolific if they are simply cut off at the surface level.

If the weeds are deep rooted, it is advisable to kill them using an appropriate weed killer.

Localised areas of weed infestation can be treated with domestic weed killers without causing damage to the top wear layer. Oil based weed killers should not be used.

## Winter care

---

During the colder winter months, the surface may be subjected to snow, ice and /or frost which usually melts as the temperatures rise.

To remove heavy falls of snow or significant ice, CONICA Ltd. recommends using Ice Melt, as it is non-abrasive and the least harmful option, both to the surface and the environment.

Metal shovels or scrapers may damage the surface and should not be used. Rock salt should not be used as it can cause unsightly stains.

Once the winter passes CONICA Ltd. recommends sweeping the surface with a stiff bristled brush to remove any built-up residue then jet washing the surface to restore its water permeability and slip resistance.



Please note: whilst snow, ice and frost are not harmful, if the play area is used during the winter without being cleared, then injury may occur. Not only will the surface be harder and lose some of its shock absorbing performance, a user could slip or injure themselves in other ways.

---

## Browse our surfacing options

Safety is and will always be the most essential part of a playground design. We understand that and offer a wide range of safety surfaces to complement and complete your new design.

We produce the ever-popular wetpour in plain colours or with bespoke graphics for additional inspiration. There's also rubber mulch, more neutral loose-fill surfacing, and everything in between.

[Browse here.](#)

We can cater for all your surfacing needs, even repairs and any tools you may need to complete them yourself.

Check out our [surfacing repair section](#) for more information.





+44 (0) 1354 638 359



[sales@onlineplaygrounds.co.uk](mailto:sales@onlineplaygrounds.co.uk)



[onlineplaygrounds.co.uk](http://onlineplaygrounds.co.uk)

