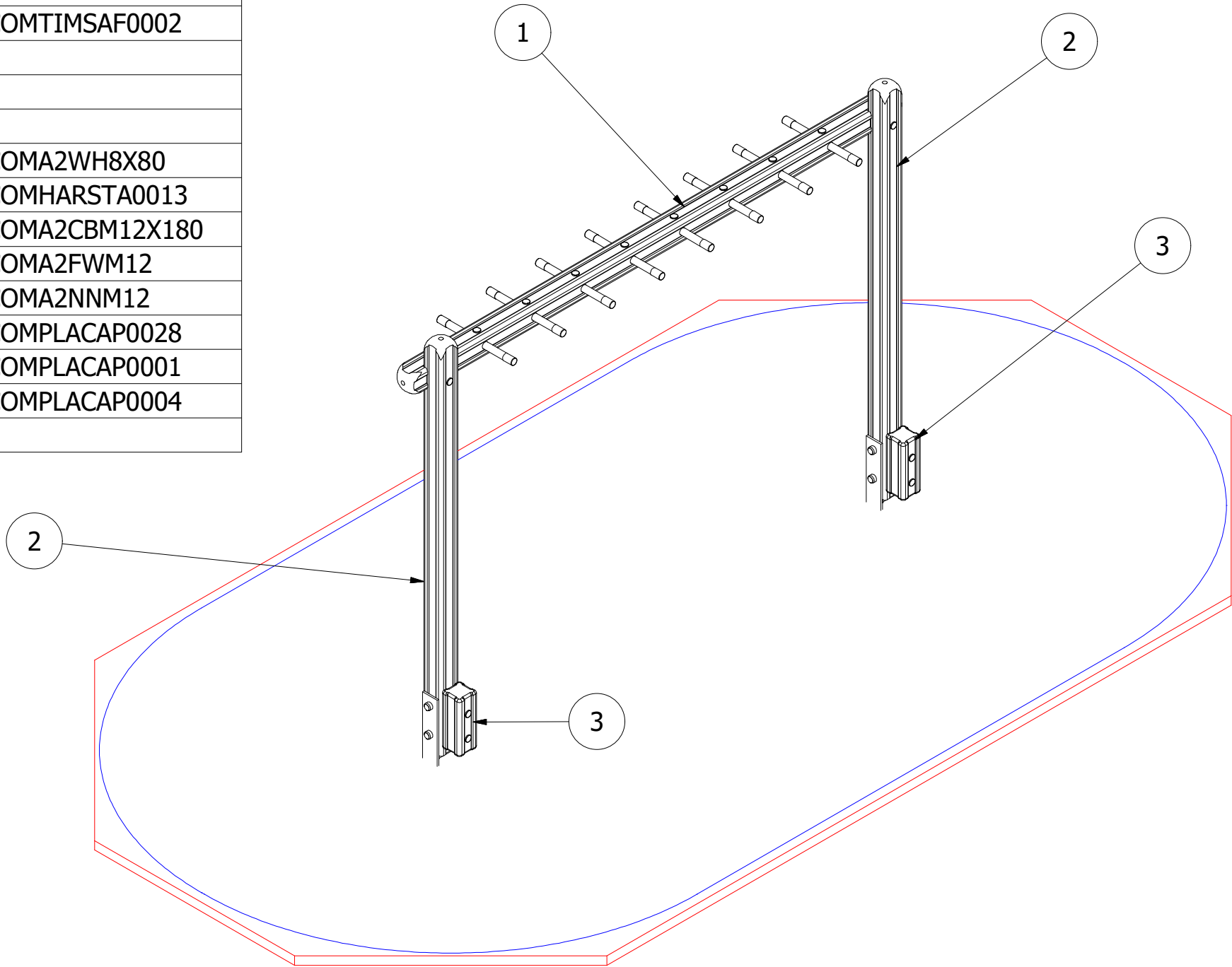
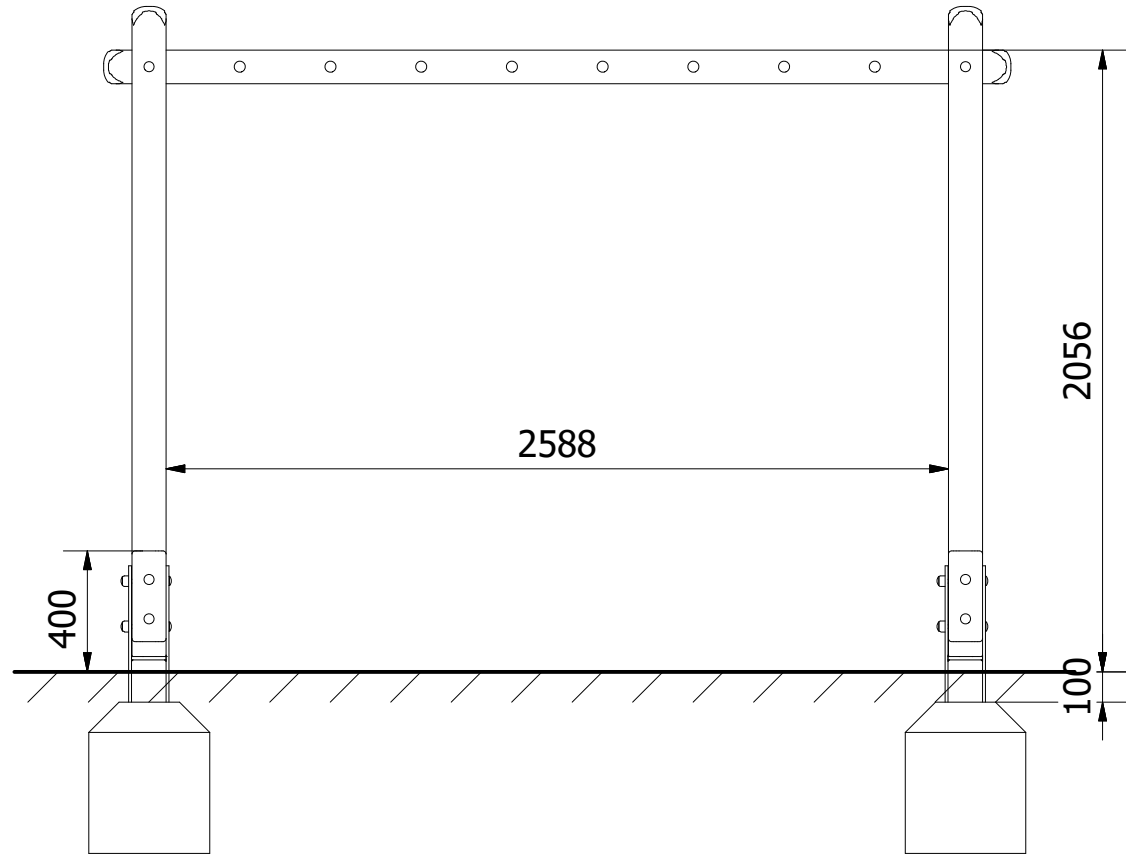


PARTS LIST				
ITEM	QTY	PART NUMBER	DESCRIPTION	STOCK NUMBER
1	1	TB-200-060	3000 X 112MM SAFALOG	COMTIMSAF0002
2	2	TB-200-906	2150 X 112MM SF	COMTIMSAF0002
3	2	MOD-600-014 - LOG STEP	LOG STEP	
4	2	MT-300-030	POST FOOT (SUIT 112MM)	
5	8	MT-300-060	450 X 33.7 DIA	
6	8	M8 X 80 TORX WASHER HEAD	80MM WASHER SCREW	COMA2WH8X80
7	4	M12 X 150 COACH BOLT	M10 X 150 (DIN 603)	COMHARSTA0013
8	2	M12 X 180 COACH BOLT	M12 X 180 (DIN 603)	COMA2CBM12X180
9	6	M12 WASHER	M12 WASHER (DIN 125)	COMA2FWM12
10	6	M12 NYLOC NUT	M12 NYLOC NUT (DIN 985)	COMA2NNM12
11	4	2 PART CAP (BLACK)	TWO PART CAP	COMPLACAP0028
12	10	30MM BOLT COVER	30MM BLACK CAP	COMPLACAP0001
13	16	FLEXI CAP	FLEXI CAP	COMPLACAP0004
14	2	400 x 400 x 500	0.08³ CONCRETE FOUNDATION	



UNLESS OTHERWISE SPECIFIED:  
DIMENSIONS ARE IN MILLIMETERS  
TOLERANCES:  
LINEAR: ±2MM  
1 DECIMAL PLACE: ±0.5MM  
ANGULAR: ±1°

PROPRIETARY AND CONFIDENTIAL

THE INFORMATION CONTAINED IN THIS  
DRAWING IS THE SOLE PROPERTY OF  
FENLAND LEISURE PRODUCTS. ANY  
REPRODUCTION IN PART OR AS A WHOLE  
WITHOUT THE WRITTEN PERMISSION  
OF FENLAND  
LEISURE PRODUCTS IS PROHIBITED.



Title: MOD-600-028 - Monkey Bars

Product Range: ECO TRAIL

FFH = 1.0M

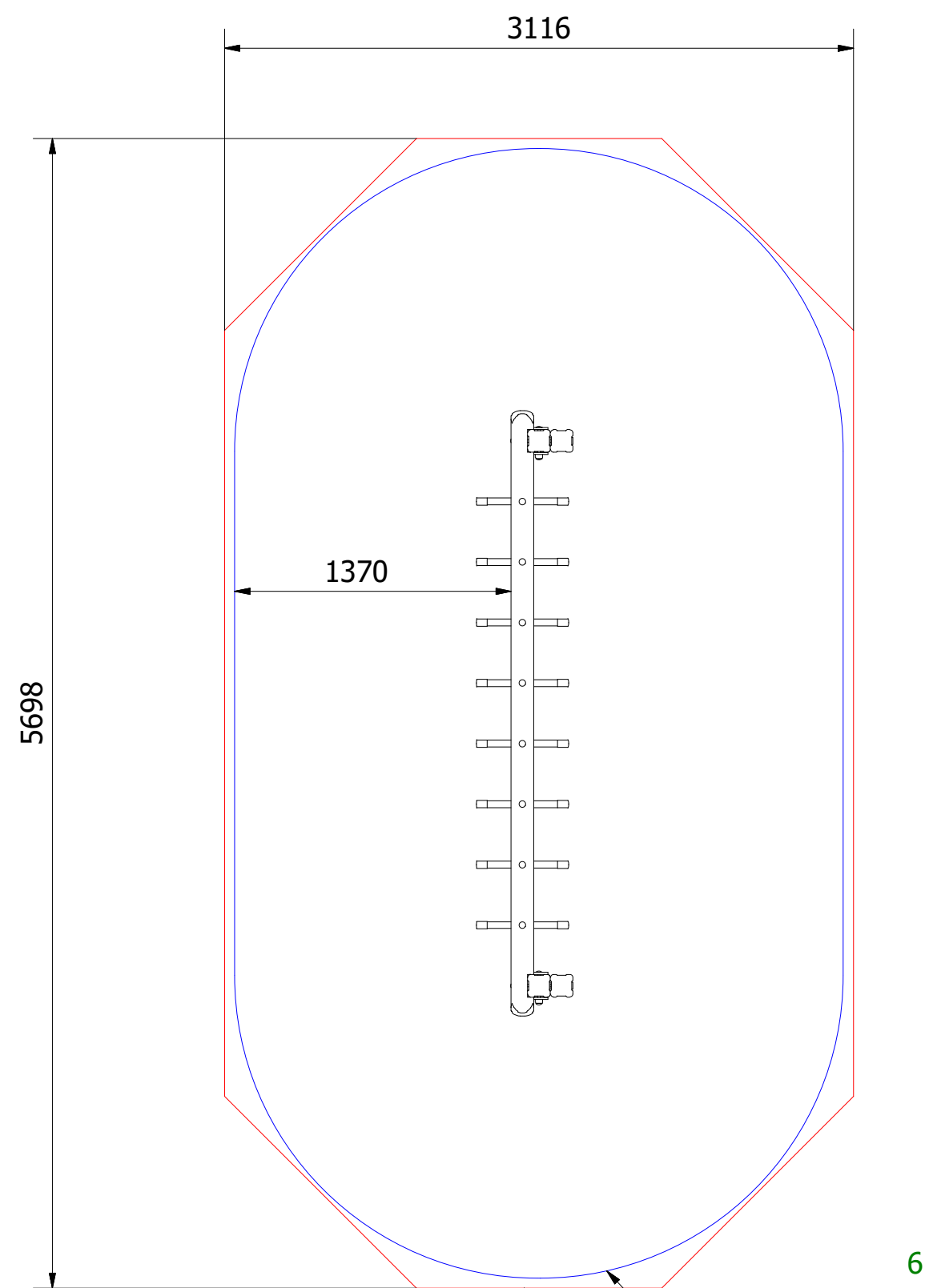
DO NOT SCALE FROM DRAWING

Tel: 01354 638359 www.onlineplaygrounds.co.uk

Date:  
21/04/2021

Page: 1

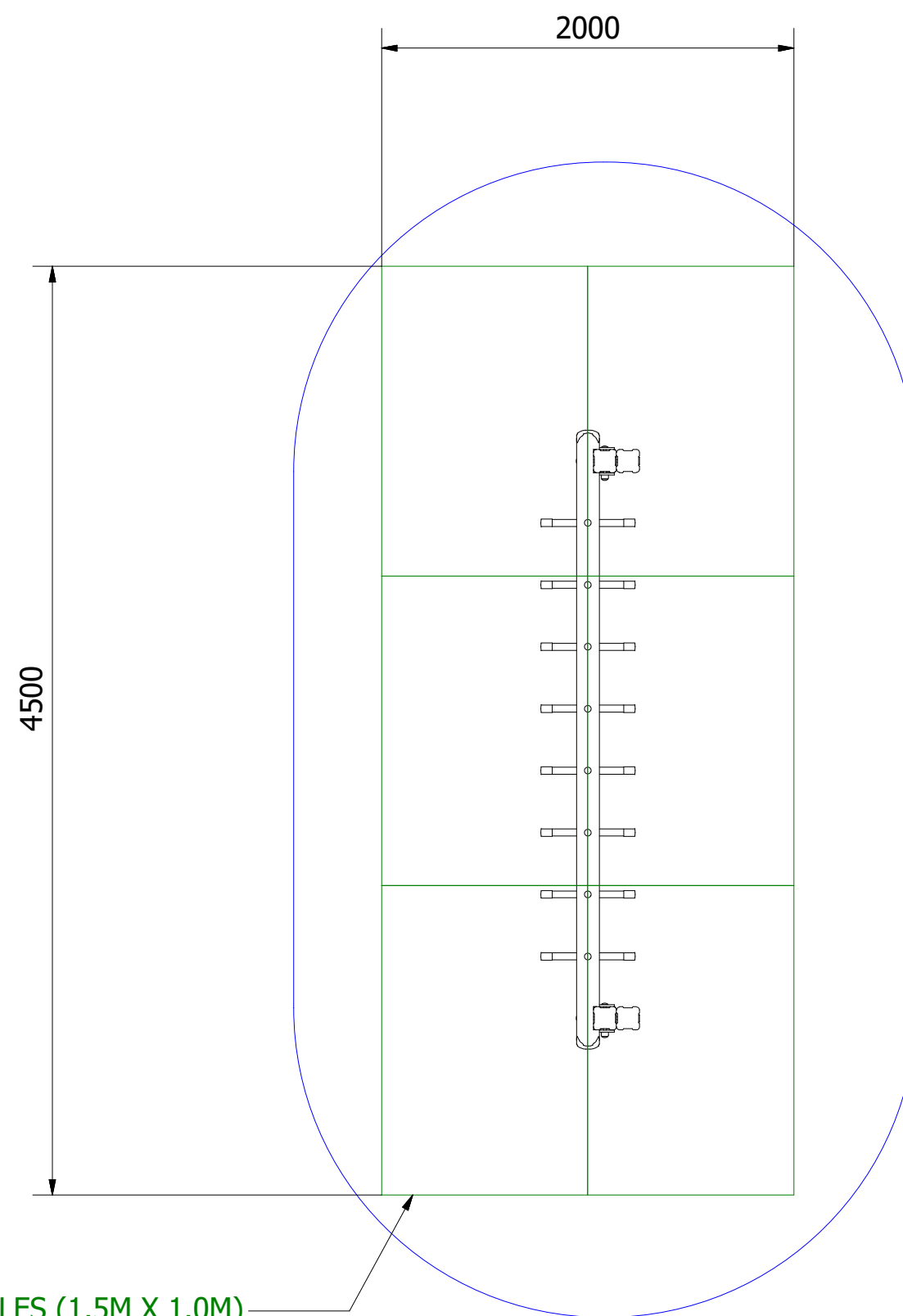
A3



WETPOUR AREA = 16.0M<sup>2</sup>  
PERIMETER = 15.4L/M

MIN SPACE

6 SAFAGRASS TILES (1.5M X 1.0M)



UNLESS OTHERWISE SPECIFIED:  
DIMENSIONS ARE IN MILLIMETERS  
TOLERANCES:  
LINEAR: ±2MM  
1 DECIMAL PLACE: ±0.5MM  
ANGULAR: ±1°

**PROPRIETARY AND CONFIDENTIAL**  
THE INFORMATION CONTAINED IN THIS  
DRAWING IS THE SOLE PROPERTY OF  
FENLAND LEISURE PRODUCTS. ANY  
REPRODUCTION IN PART OR AS A WHOLE  
WITHOUT THE WRITTEN PERMISSION  
OF FENLAND  
LEISURE PRODUCTS IS PROHIBITED.



Title: MOD-600-028 - Monkey Bars

Product Range: ECO TRAIL

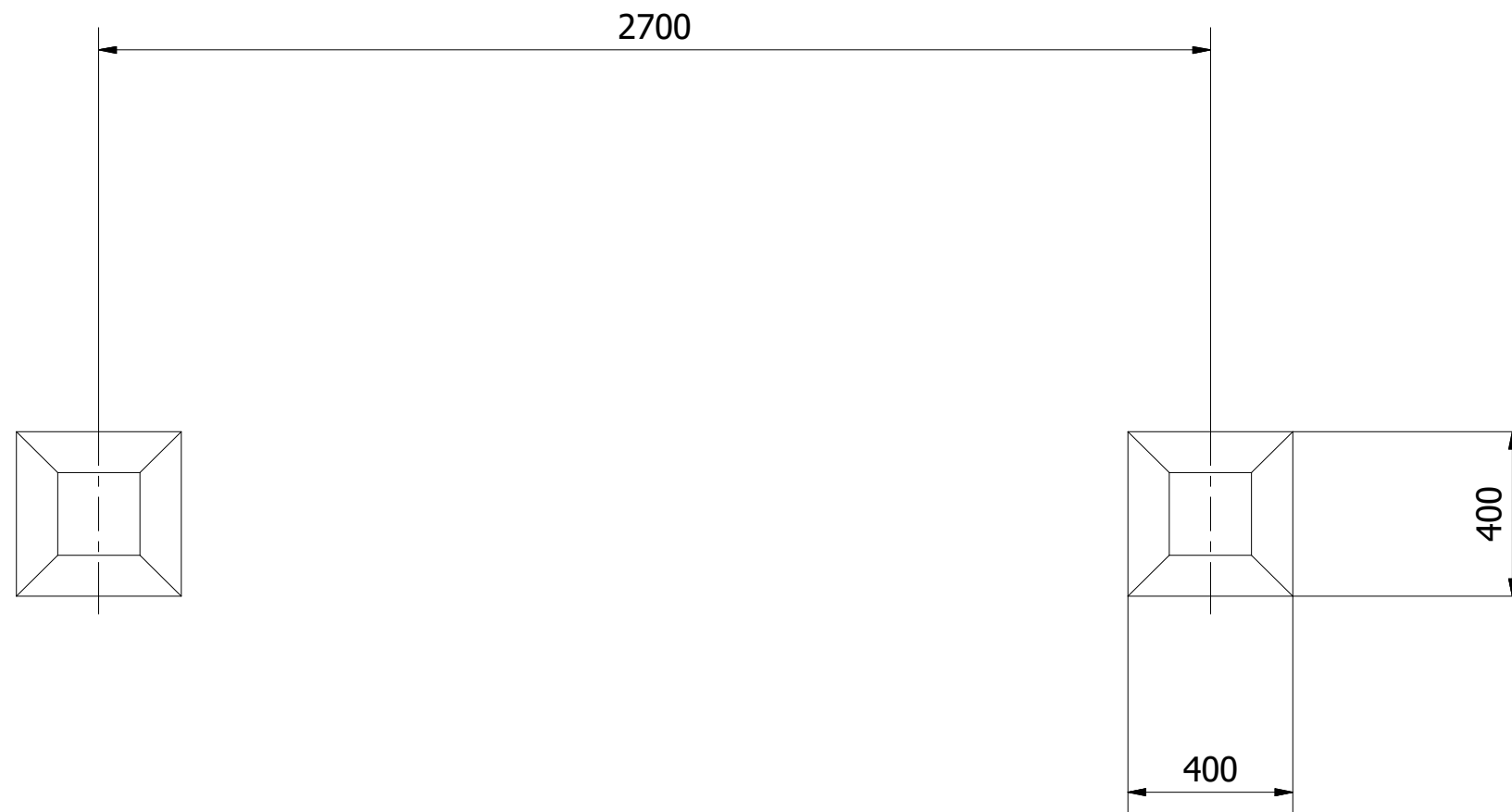
Date:  
21/04/2021


Page: 2

A3

DO NOT SCALE FROM DRAWING

Tel: 01354 638359 www.onlineplaygrounds.co.uk

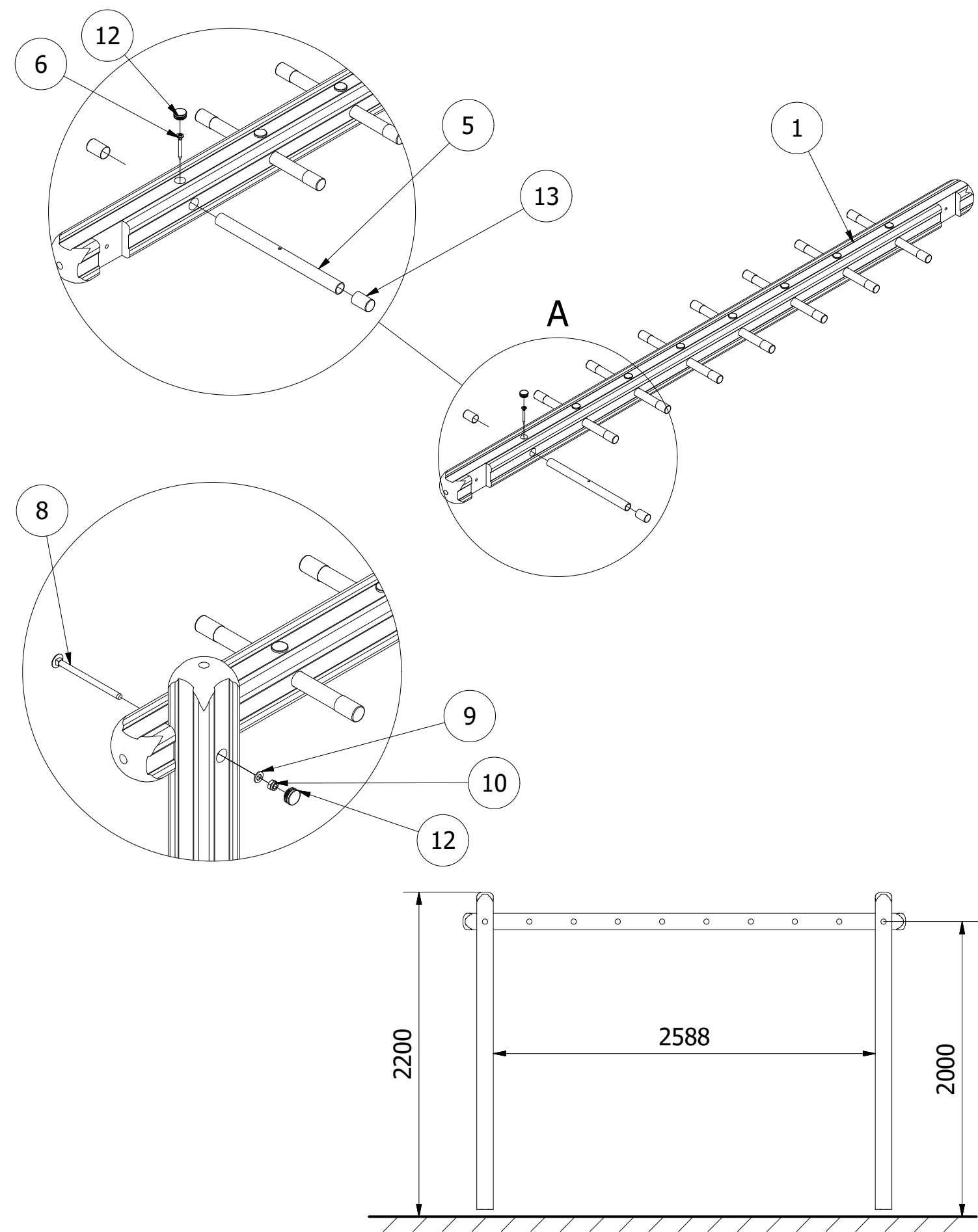


<p>UNLESS OTHERWISE SPECIFIED: DIMENSIONS ARE IN MILLIMETERS TOLERANCES:</p> <p>LINEAR: ±2MM 1 DECIMAL PLACE: ±0.5MM ANGULAR: ±1°</p>		<p><b>PROPRIETARY AND CONFIDENTIAL</b></p> <p>THE INFORMATION CONTAINED IN THIS DRAWING IS THE SOLE PROPERTY OF FENLAND LEISURE PRODUCTS. ANY REPRODUCTION IN PART OR AS A WHOLE WITHOUT THE WRITTEN PERMISSION OF FENLAND LEISURE PRODUCTS IS PROHIBITED.</p>		<p>Title:</p> <p>MOD-600-028 - Monkey Bars</p>	
				<p>Product Range:</p> <p>ECO TRAIL</p>	
				<p>Date:</p> <p>21/04/2021</p>	
				<p>Page: 3</p>	
				<p>A3</p>	
				<p>DO NOT SCALE FROM DRAWING</p>	
<p>Tel: 01354 638359    <a href="http://www.onlineplaygrounds.co.uk">www.onlineplaygrounds.co.uk</a></p>					

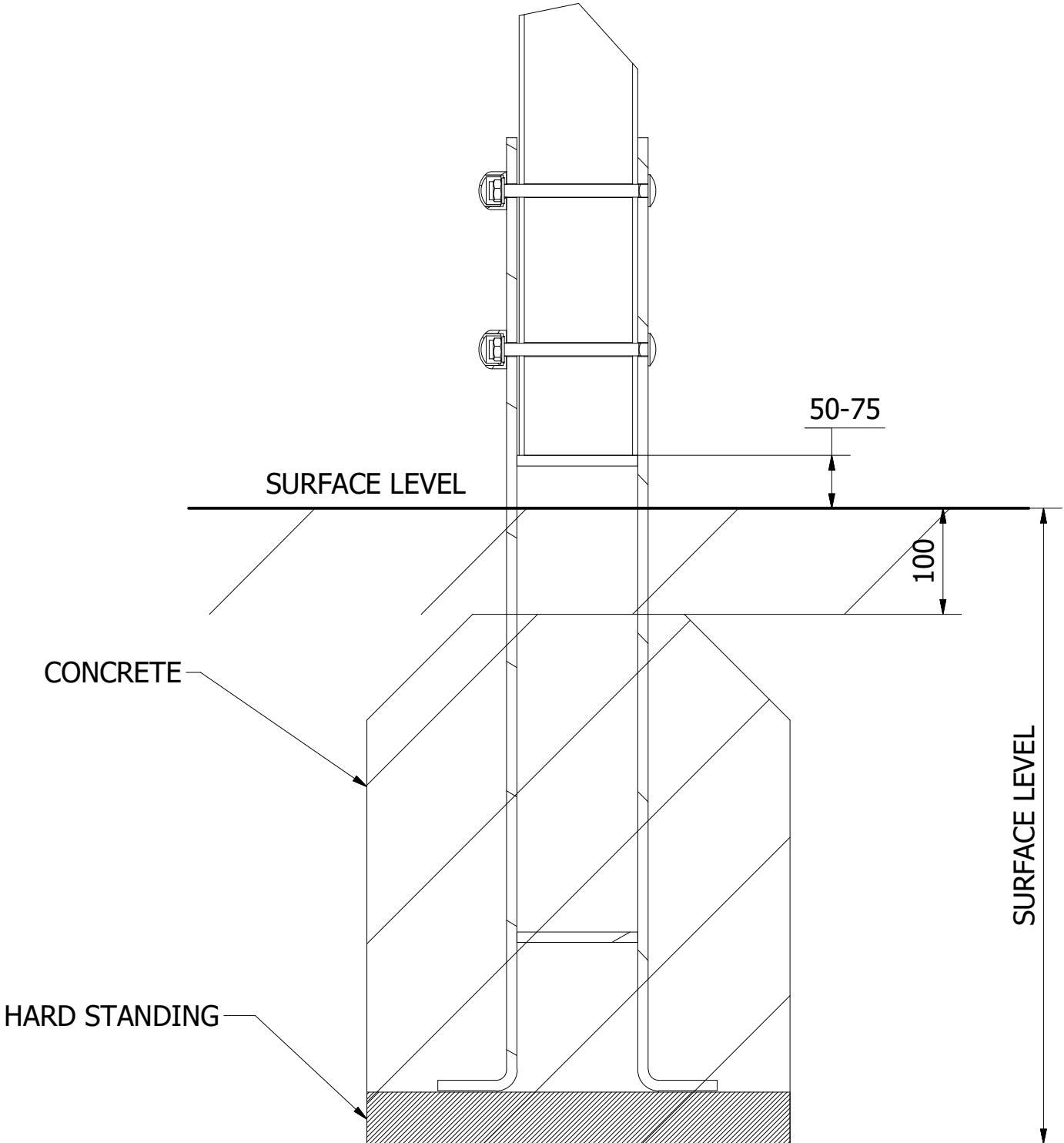



ALL FOUNDATIONS 400 X 400 X 600 DEEP UNLESS OTHERWISE SPECIFIED

1. ASSEMBLE THE MONKEY BARS AS SHOWN BELOW. POSITION THE UPRIGHT POSTS INTO THE FOUNDATION HOLES, ENSURE THEY ARE LEVEL & PLUMB AND BRACE.
2. SECURE THE MONKEY BARS TO THE UPRIGHT POSTS USING THE SUPPLIED FIXINGS.



2. FINALLY, ENSURE UNIT IS LEVEL AND PLUMB, ALL FIXINGS HAVE BEEN TIGHTENED AND PROTECTIVE CAPS IN PLACE. ADD CONCRETE TO EACH FOUNDATION HOLE AND LEAVE FOR 48 HOURS



UNLESS OTHERWISE SPECIFIED: DIMENSIONS ARE IN MILLIMETERS TOLERANCES: LINEAR: ±2MM 1 DECIMAL PLACE: ±0.5MM ANGULAR: ±1°	PROPRIETARY AND CONFIDENTIAL  THE INFORMATION CONTAINED IN THIS DRAWING IS THE SOLE PROPERTY OF FENLAND LEISURE PRODUCTS. ANY REPRODUCTION IN PART OR AS A WHOLE WITHOUT THE WRITTEN PERMISSION OF FENLAND LEISURE PRODUCTS IS PROHIBITED.	Title:  MOD-600-028 - Monkey Bars	
		Product Range:  ECO TRAIL	
		DO NOT SCALE FROM DRAWING	Date:  21/04/2021
			Page: 4
			A3
			Tel: 01354 638359    www.onlineplaygrounds.co.uk

