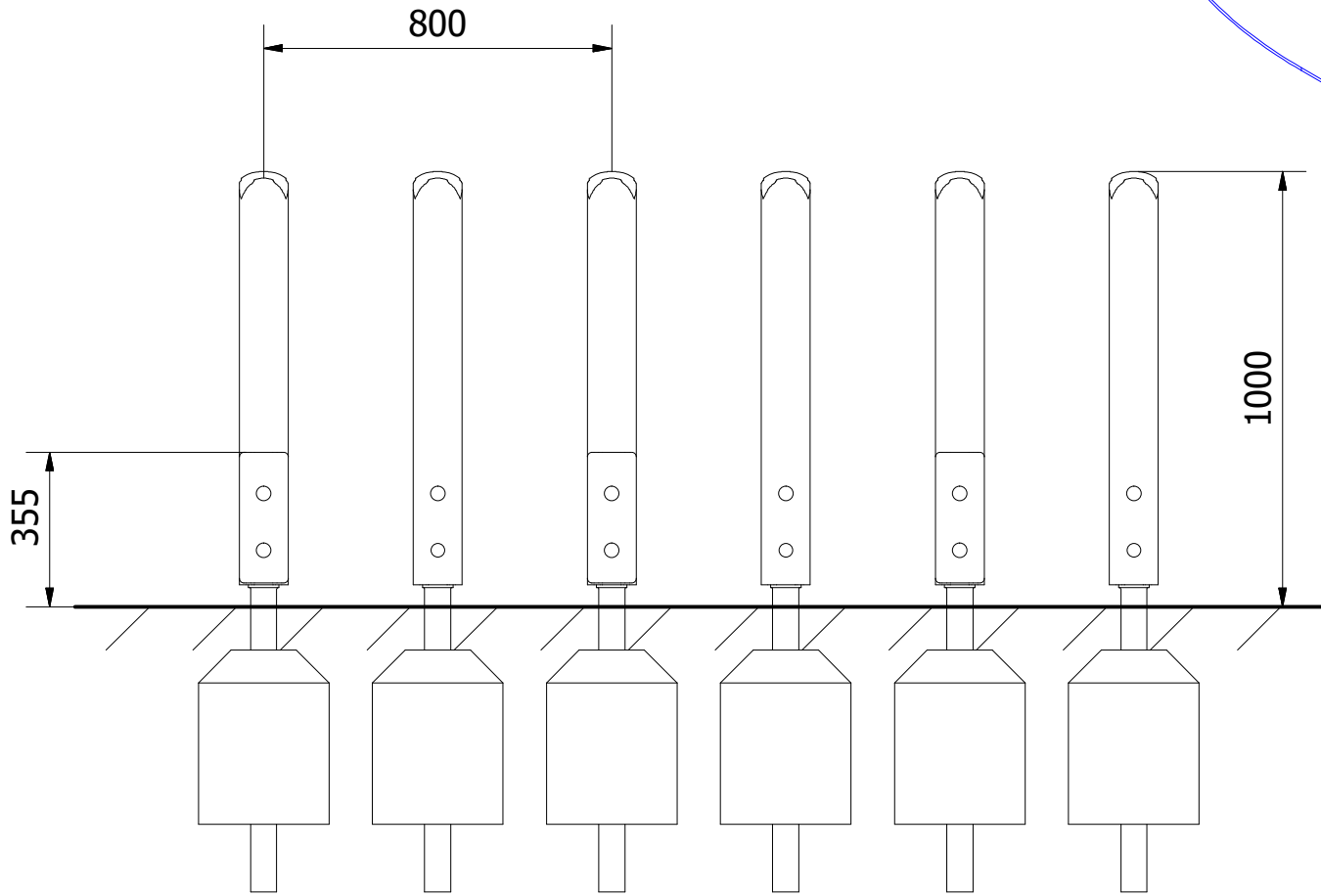
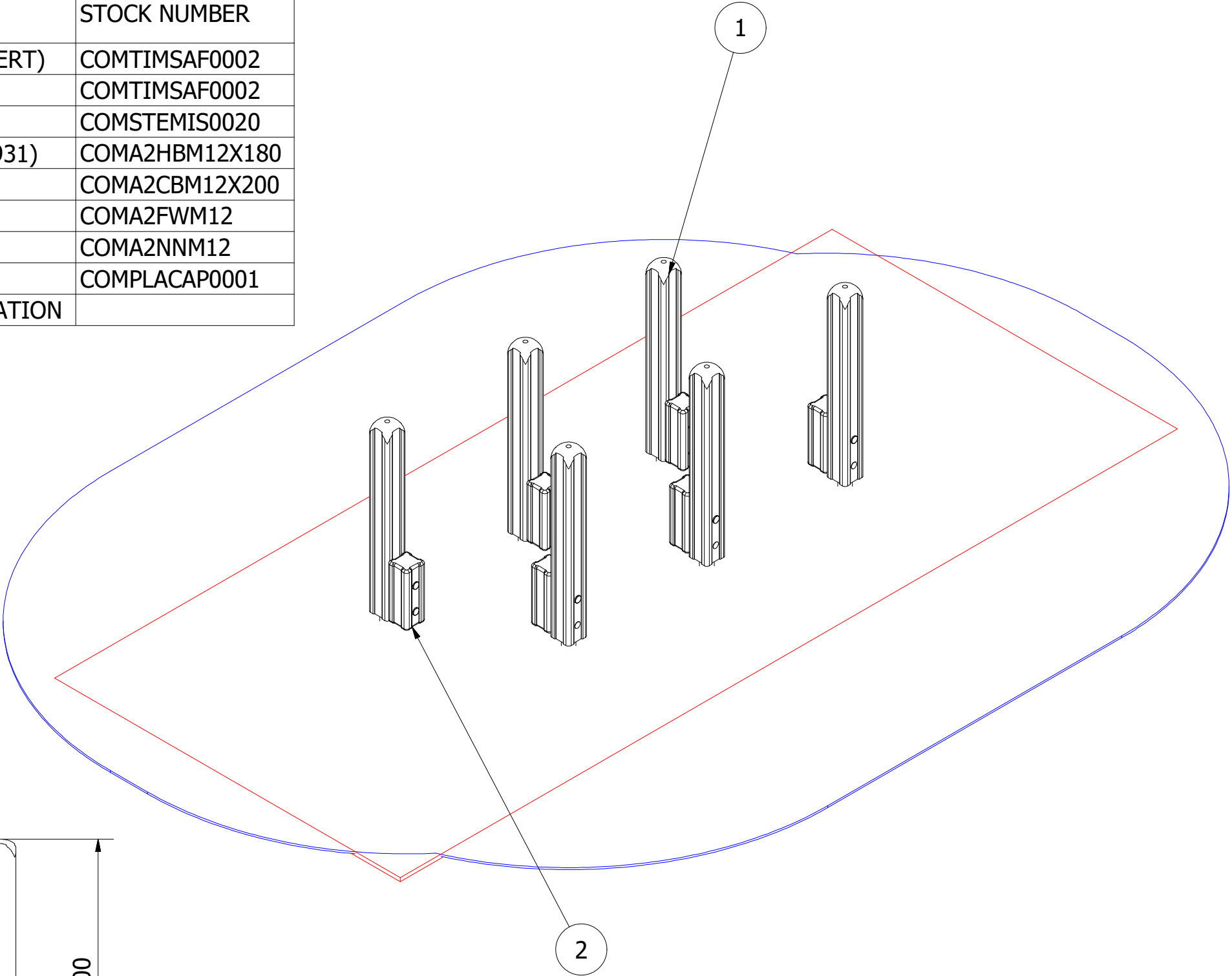


PARTS LIST				
ITEM	QTY	PART NUMBER	DESCRIPTION	STOCK NUMBER
1	6	TB-200-001_B	950MM X 112MM (POST INSERT)	COMTIMSAF0002
2	6	TB-200-002	300 X 112MM SAFALOG	COMTIMSAF0002
3	6	ART. 1500 1000 GROUND POST	GROUND SHOE	COMSTEMIS0020
4	6	M12 X 180 HEX HEAD	M12 X 180 HEX HEAD (DIN 931)	COMA2HBM12X180
5	6	M12 X 200 COACH BOLT	M12 X 200 COACH BOLT	COMA2CBM12X200
6	12	M12 WASHER	M12 WASHER (DIN 125)	COMA2FWM12
7	12	M12 NYLOC NUT	M12 NYLOC NUT (DIN 985)	COMA2NNM12
8	18	30MM BOLT COVER	30MM BLACK CAP	COMPLACAP0001
9	6	300 x 300 x 400	0.036M³ CONCRETE FOUNDATION	

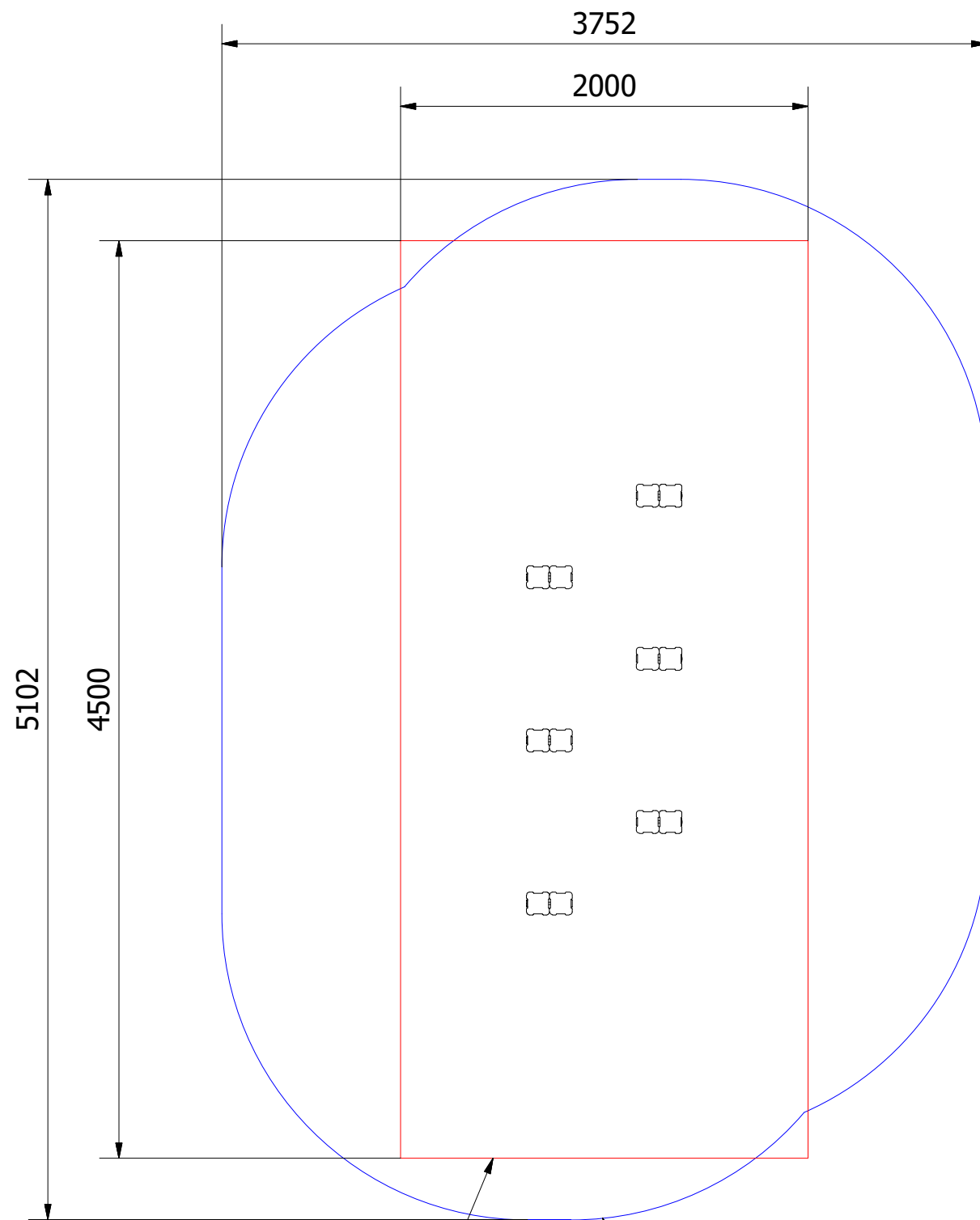


UNLESS OTHERWISE SPECIFIED:
DIMENSIONS ARE IN MILLIMETERS
TOLERANCES:
LINEAR: ±2MM
1 DECIMAL PLACE: ±0.5MM
ANGULAR: ±1°

PROPRIETARY AND CONFIDENTIAL
THE INFORMATION CONTAINED IN THIS
DRAWING IS THE SOLE PROPERTY OF
FENLAND LEISURE PRODUCTS. ANY
REPRODUCTION IN PART OR AS A WHOLE
WITHOUT THE WRITTEN PERMISSION
OF FENLAND
LEISURE PRODUCTS IS PROHIBITED.

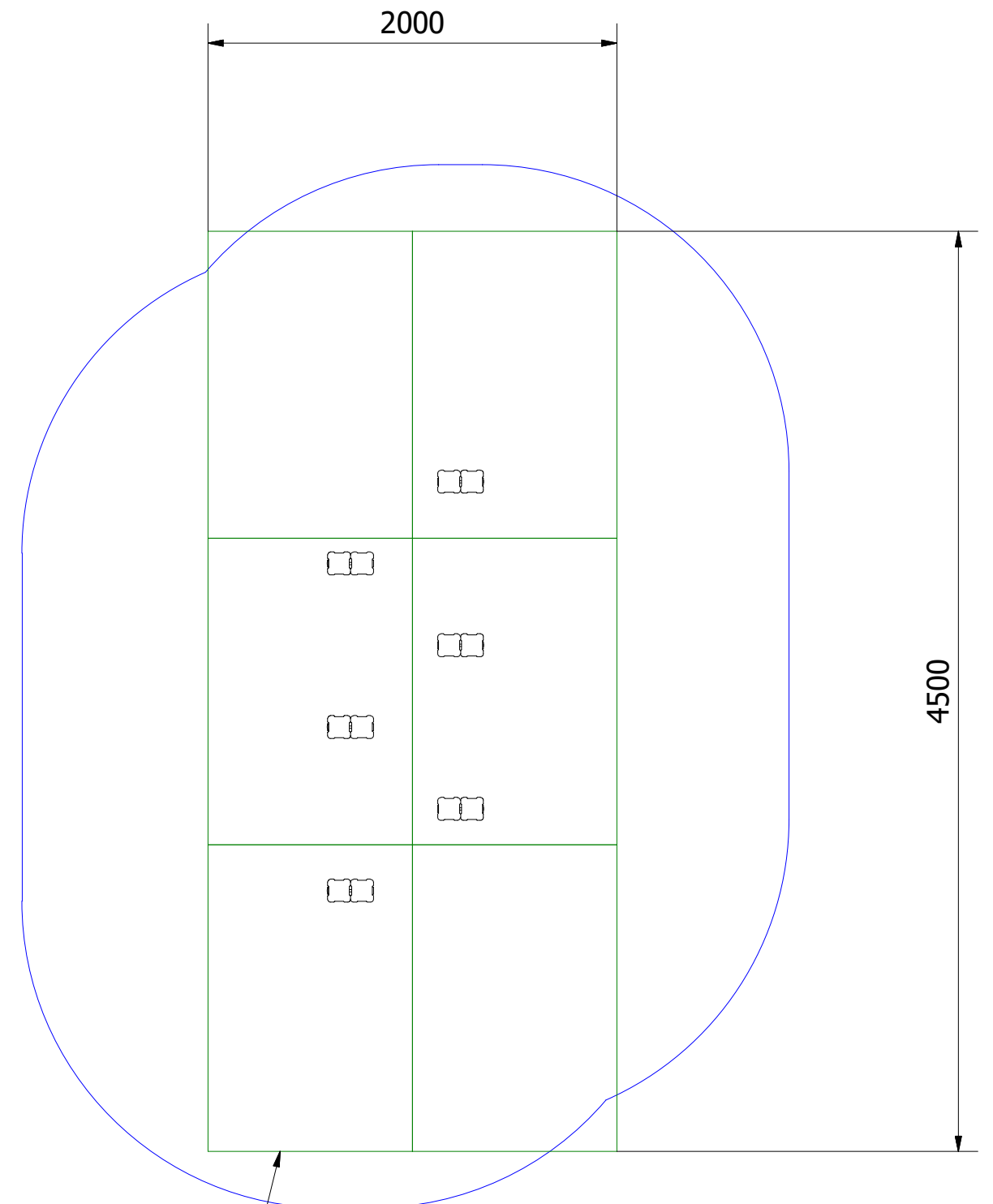


Title: MOD-600-018 - STRETCH & STEP_SF	
Product Range: ECO TRAIL	
DO NOT SCALE FROM DRAWING	Date: 04/07/2017
	Page: 1
	A3
Tel: 01354 638359 www.onlineplaygrounds.co.uk	




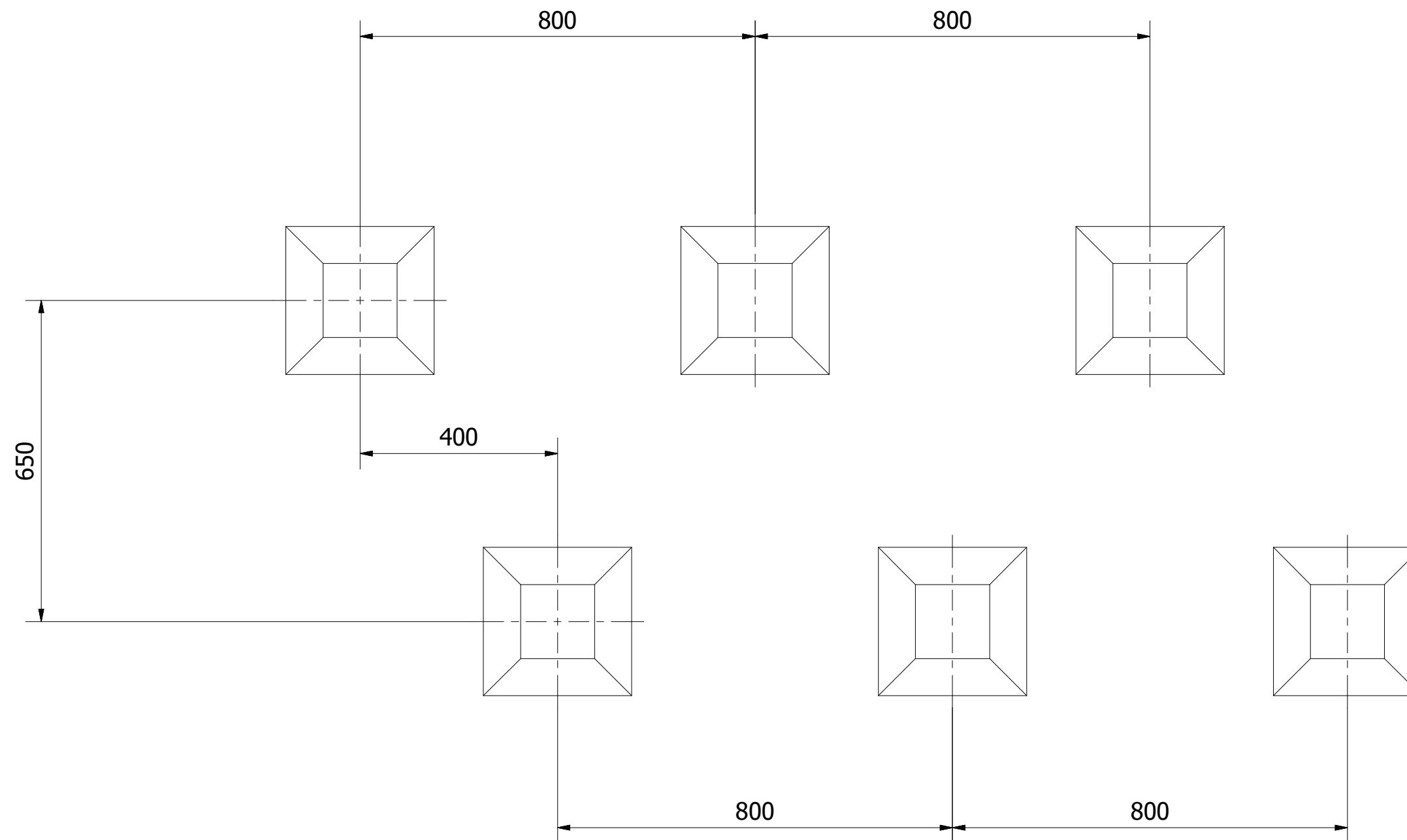
WETPOUR AREA = 9.0M²
PERIMETER = 13.0 L/M

MIN SPACE



6 SAFAGRASS TILES (1.5M X 1.0M)

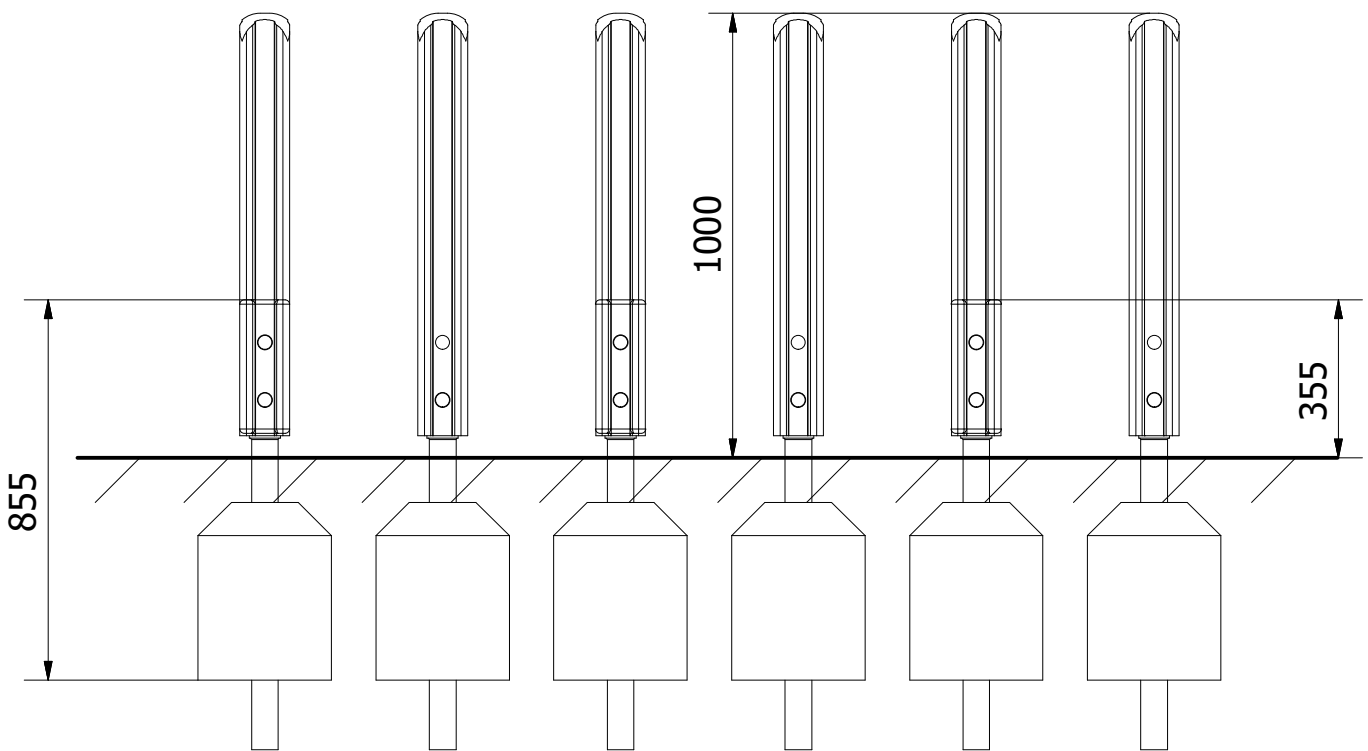
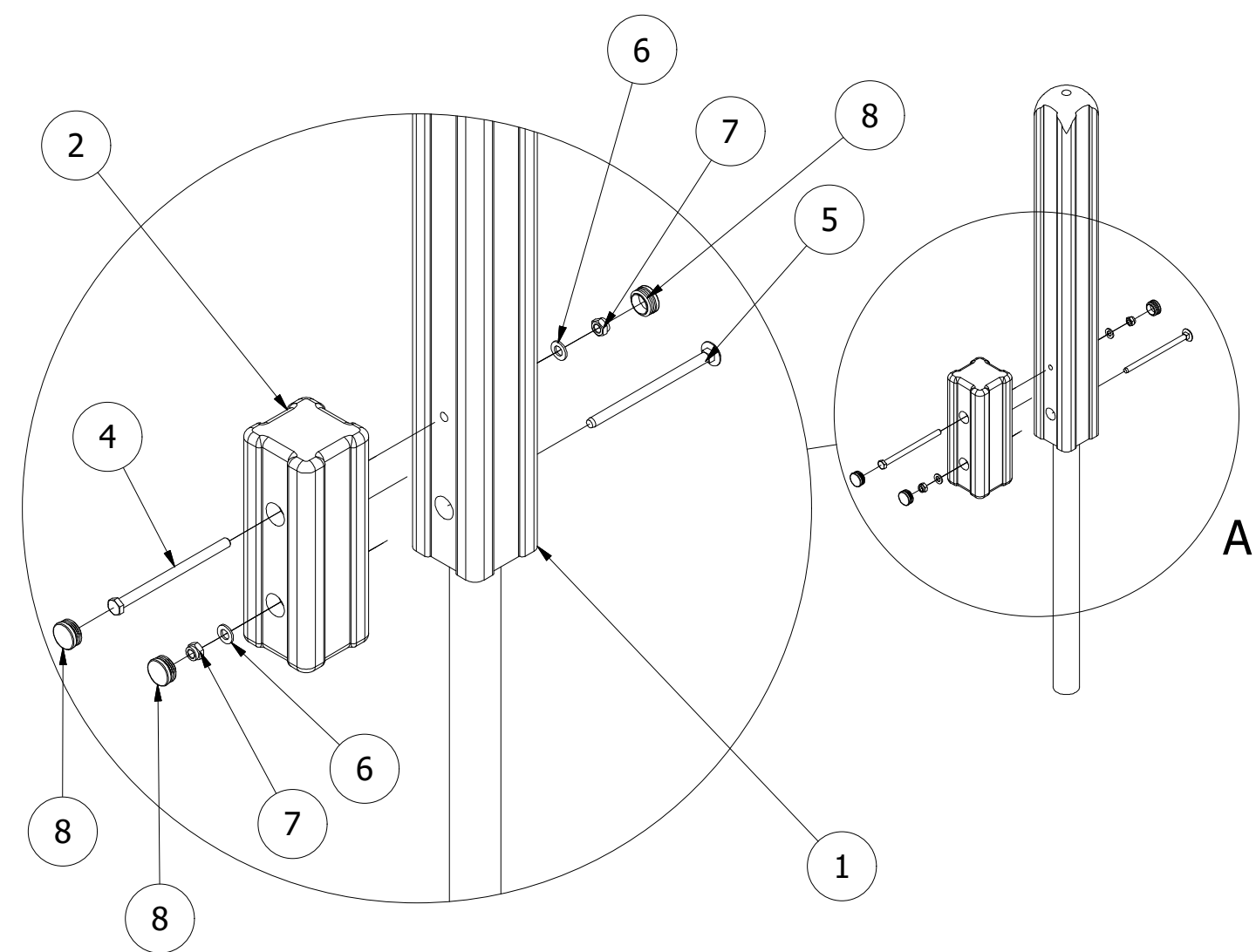
UNLESS OTHERWISE SPECIFIED: DIMENSIONS ARE IN MILLIMETERS TOLERANCES: LINEAR: ±2MM 1 DECIMAL PLACE: ±0.5MM ANGULAR: ±1°	PROPRIETARY AND CONFIDENTIAL THE INFORMATION CONTAINED IN THIS DRAWING IS THE SOLE PROPERTY OF FENLAND LEISURE PRODUCTS. ANY REPRODUCTION IN PART OR AS A WHOLE WITHOUT THE WRITTEN PERMISSION OF FENLAND LEISURE PRODUCTS IS PROHIBITED.	Title: MOD-600-018 - STRETCH & STEP_SF	
		Product Range: ECO TRAIL	
		Date: 04/07/2017	
		Page: 2	
		A3	
		DO NOT SCALE FROM DRAWING	
		Tel: 01354 638359 www.onlineplaygrounds.co.uk	



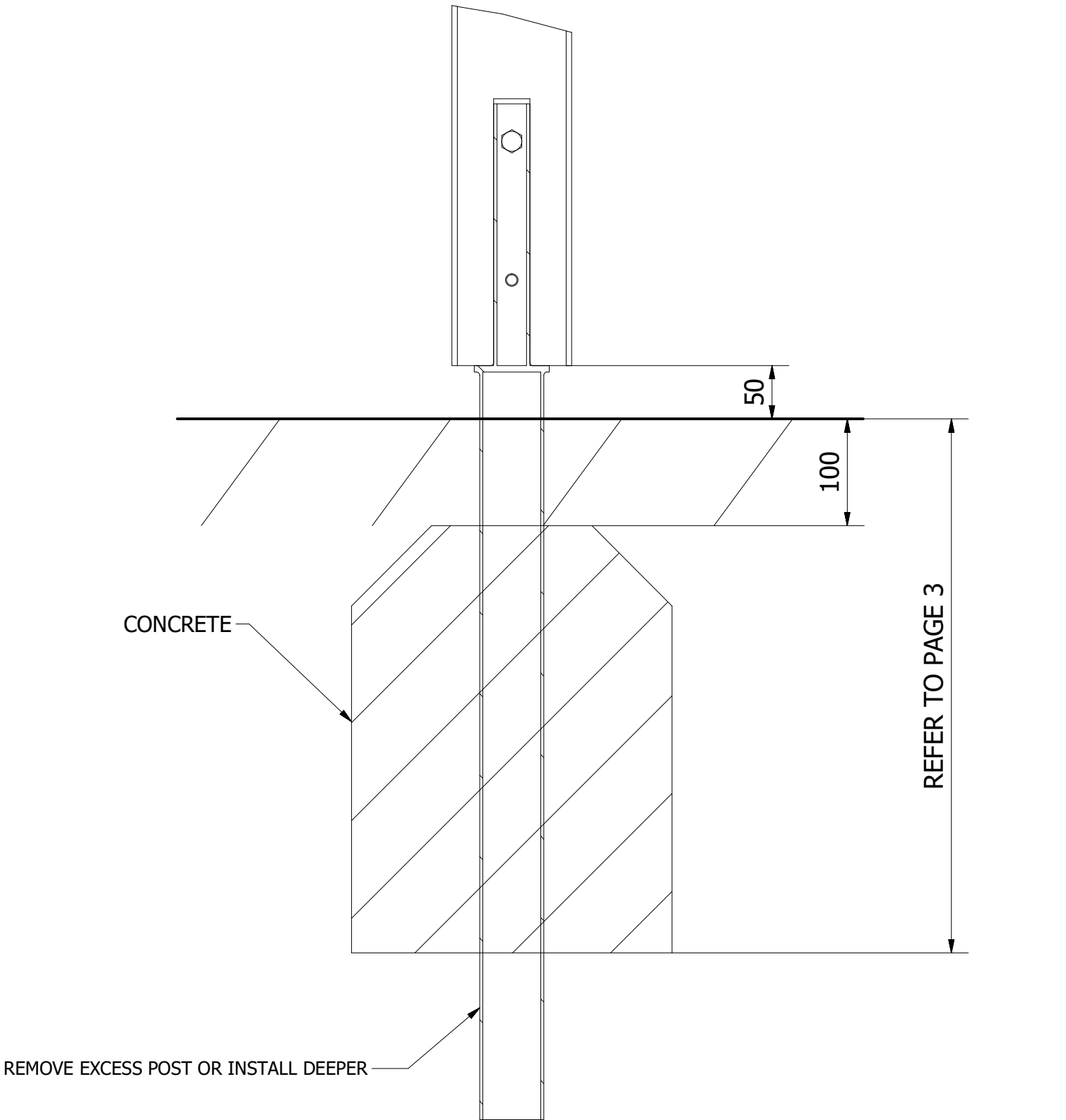
<p>UNLESS OTHERWISE SPECIFIED: DIMENSIONS ARE IN MILLIMETERS TOLERANCES:</p> <p>LINEAR: ±2MM 1 DECIMAL PLACE: ±0.5MM ANGULAR: ±1°</p>		<p>PROPRIETARY AND CONFIDENTIAL</p> <p>THE INFORMATION CONTAINED IN THIS DRAWING IS THE SOLE PROPERTY OF FENLAND LEISURE PRODUCTS. ANY REPRODUCTION IN PART OR AS A WHOLE WITHOUT THE WRITTEN PERMISSION OF FENLAND LEISURE PRODUCTS IS PROHIBITED.</p>		<p>Title: MOD-600-018 - STRETCH & STEP_SF</p>	
				<p>Product Range: ECO TRAIL</p>	
				<p>Date:</p> <p>04/07/2017</p>	
				<p>Page: 3</p>	
				<p>A3</p>	
				<p>DO NOT SCALE FROM DRAWING</p>	
<p>Tel: 01354 638359 www.onlineplaygrounds.co.uk</p>					

ALL FOUNDATIONS 300 X 300 X 500 DEEP UNLESS OTHERWISE SPECIFIED

1. SECURE EACH STEPPING POST TO THE UPRIGHT POST AS SHOWN BELOW. POSITION EACH UPRIGHT POST INTO THE FOUNDATIONS HOLES AND BRACE.



2. FINALLY, ENSURE UNIT IS LEVEL AND PLUMB, ALL FIXINGS HAVE BEEN TIGHTENED AND PROTECTIVE CAPS IN PLACE. ADD CONCRETE TO EACH FOUNDATION HOLE AND LEAVE FOR 48 HOURS



UNLESS OTHERWISE SPECIFIED:
DIMENSIONS ARE IN MILLIMETERS
TOLERANCES:
LINEAR: $\pm 2\text{MM}$
1 DECIMAL PLACE: $\pm 0.5\text{MM}$
ANGULAR: $\pm 1^\circ$

PROPRIETARY AND CONFIDENTIAL
THE INFORMATION CONTAINED IN THIS
DRAWING IS THE SOLE PROPERTY OF
FENLAND LEISURE PRODUCTS. ANY
REPRODUCTION IN PART OR AS A WHOLE
WITHOUT THE WRITTEN PERMISSION
OF FENLAND
LEISURE PRODUCTS IS PROHIBITED.

Title: MOD-600-018 - STRETCH & STEP_SF

Product Range: ECO TRAIL

Date:
04/07/2017

Page: 4

A3

DO NOT SCALE FROM DRAWING

Tel: 01354 638359 www.onlineplaygrounds.co.uk

